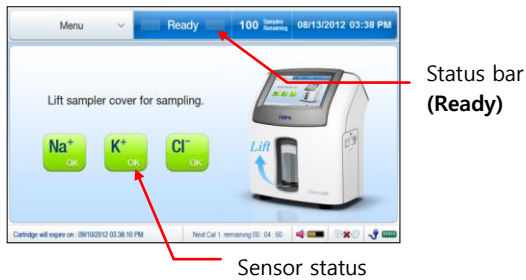


1. Sample preparation

- Sample type: Heparinized whole blood, serum, and plasma.
- Minimum sample volume: 60 µL

2. Sample introduction

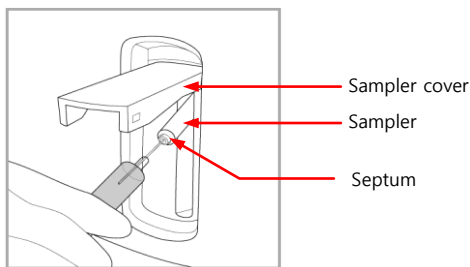
- 1) Please confirm the instrument is ready before use; the main screen should show **Ready** and all sensor status should be **OK** as shown below.



- 2) To introduce the sample into the analyzer, lift up the sampler cover. The **Introduce sample now** message appears as follows.



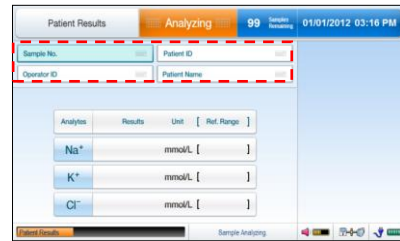
- 3) Immerse the end of the sampler probe into the sample container (e.g., syringe).



- 4) Press **Aspirate** to aspirate the sample and the **Aspirating sample. Please wait** message appears on the screen while aspirating.
- 5) When the **Remove sample now** message appears, remove the sample container from the sampler.
- 6) Wait a few seconds while the sample is moving inside of the cartridge.
- 7) When the **Close sampler cover now** message appears, close the sampler cover back to original position.

3. Sample information entry

Please enter **Sample No, Patient ID, Operator ID, and Patient Name** in each tab shown below while waiting for the result. Either the barcode scanner or on-screen keyboard can be used.



4. Result

The result of analysis is shown up as below.



5. Examine saved results

Please follow menu operations below to retrieve the saved data.

- ① Menu → 1 Last Patient Results
- ② Menu → Full Menu → 1 Database → 1 Patient Data

6. Calibration

Manual calibration can be done by user if necessary. Please follow menu operations below.

- ① Menu → 4 Run Cal → Run Cal 1 or Run Cal 2
- ② Menu → Full Menu → 2 Maintenance → 1 Run Cal → Run Cal 1 or Run Cal 2

7. Download the cartridge data

1) The cartridge data can be transferred to USB memory by following menu operations below.

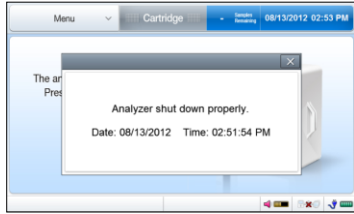
- Menu → Full Menu → 1 Database → 4 Cartridge data
- 2) A list of recently used cartridge will show up. Please select the exact cartridge that you want to download, and press **Copy** button.
 - 3) Insert **USB memory** to **USB port**.
 - 4) Remove the **USB memory** after download is completed.
 - 5) You can check the saved data with PC using the **USB memory**.
 - Filename of the cartridge data: "analyzer serial number_cartridge serial number.zip" (ex. iSmart50001_A012345678.zip)

8. Cautions

- ⚠ All the sample should be treated as biohazardous materials with the potential carrying infectious agents.
- ⚠ Please handle the sample properly not to introduce air bubble, clot, and hemolyzed blood in the sample.

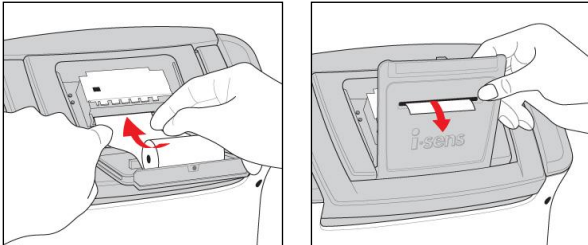
1. Turn on the analyzer

- 1) Remove all other USB device other than barcode scanner.
- 2) Confirm the power connection via power adapter and turn on the power switch on the back of the analyzer.
- 3) Once the software is loaded in the memory successfully, you will see the last shutdown message on the screen.



2. Installation of printer paper

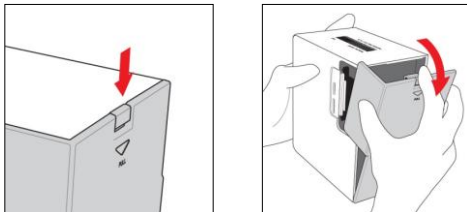
- 1) Open the printer cover and insert the printer paper. The end of paper should be parallel to slot as shown below. (Direction of paper roll)



- 2) After the paper is fed through the slot, insert the roll in the indented area under the slot as shown above while holding the end of the printer paper above the slot.

3. Installation of the cartridge

- 1) Take a new cartridge and remove the cover.



- 2) From the main screen, press **Next** button to replace the cartridge and the following screen will show up. Press **Next**. Open the door on the right side. If there is a used cartridge inside, remove the used cartridge.



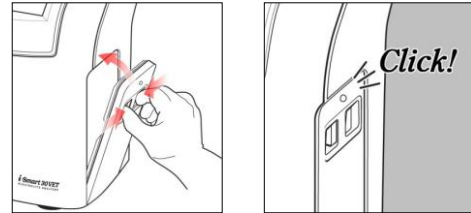
- 3) Scan barcode on the new cartridge using barcode scanner, and the gray box will turn to the green.



- 4) Insert the new cartridge after barcode scan.



- 5) Push the button on the door with your two fingers as shown below and close the door with a gentle pressure. You will hear **clicking sound** when the door is properly locked.



- 6) Once the cartridge door is properly locked, the analyzer automatically starts **Warming up**. The warm-up process will take about 25 minutes.

- 7) If you want to replace the cartridge anytime before its running lifetime, you can do this by following menu operations below.

- Menu → **Remove Cartridge**
- Menu → Full Menu → **Maintenance** → **Remove Cartridge**

4. Turn off the analyzer

TURN-OFF IS ONLY FOR MAINTENANCE PURPOSES. i-Smart 30 PRO should stay turned on for 24 hours/day and 7days/week. Shutting down the instrument with a cartridge inside may cause unexpected termination of the cartridge.

- 1) Remove the cartridge before turning off.
- 2) Follow menu operations below to initiate shutdown process.
 - Menu → Full Menu → **Shutdown**
- 3) Press **Next** button to reboot analyzer. (Rebooting before power down will secure your data from the accidental loss by abrupt power-off.)
- 4) Rebooting may take about two minutes until "**Turn off the analyzer**" message appears on the screen. When the progress bar reaches 100%, it is safe to turn off the power switch on the backside of analyzer.



⚠ PLEASE MAKE SURE NOT TO TURN OFF THE POWER UNLESS SHUTDOWN PROCESS IS COMPLETED.

